

The Otter Project

MPA Watch Survey Data

April 2014 – June 2014

Total surveys to date: 4,804

Total surveys for this year: 697

Contributing volunteers: 54

MPA Watch is a citizen science initiative to monitor human use of coastal natural resources by training and supporting volunteers in the collection of relevant, scientifically rigorous, and broadly accessible data. Data are meant to inform the management, enforcement, and science of California's marine protected areas (MPAs) and allow us to see how human uses are changing as a result of MPA implementation.

Volunteers record consumptive activities such as commercial fishing, shore fishing, and clamming, and non-consumptive activities such as swimming, SCUBA diving, and tide pooling. Potential users of MPA Watch data span academia, natural resource management agencies, and local communities. Data collection and this report will support MPA assessments and adaptive management; inform enforcement, compliance, and education efforts; and build social capital.

<p>Below show totals of all surveys done in the year of 2013, broken down into regions & specific sites.</p> <p>Santa Cruz total: 873 Santa Cruz total this year: 71</p> <p>Bean Hollow: 10 Ano Nuevo: 7 Coastal Bluffs: 4 Natural Bridges: 50</p>	<p>Monterey total: 2,432 Monterey total this year: 265</p> <p>Lover's Point: 122 Asilomar: 68 17 Mile Drive: 35 Pt. Lobos: 27 Malpaso: 13</p>	<p>San Luis Obispo total: 1,499 San Luis Obispo total this year: 361</p> <p>Cambria: 180 Montana de Oro: 133 Pt. Buchon: 48</p>
--	--	--

MPA Watch Survey Data
Quarter 2
April 2014 – June 2014

Total surveys to date: 4,833

Total surveys for this quarter: 415

Contributing volunteers:

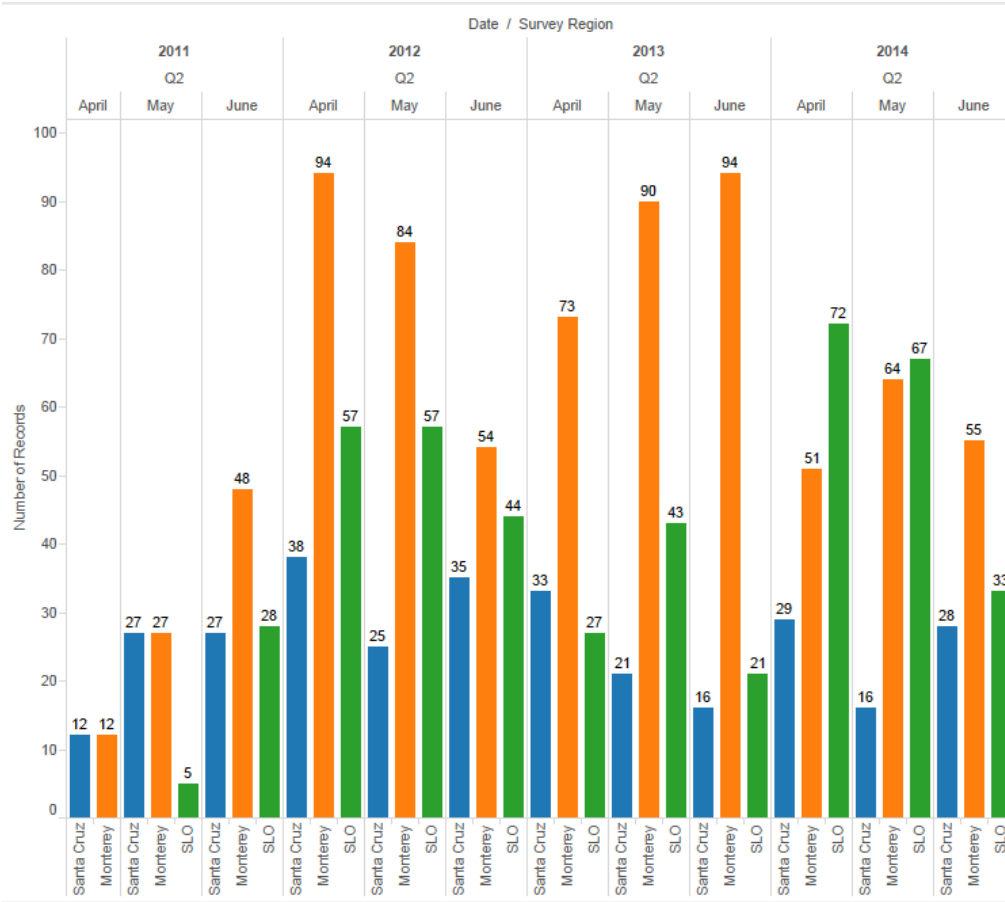
Santa Cruz total: 884 Santa Cruz (this quarter): 73 Bean Hollow: 10 Ano Nuevo: 6 Coastal Bluffs: 5 Natural Bridges: 52	Monterey total: 2,449 Monterey total (this quarter): 170 Lover's Point: 70 Asilomar: 42 17 Mile Drive: 22 Pt. Lobos: 28 Malpaso: 8	San Luis Obispo total: 1,500 San Luis Obispo total (this quarter): 172 Cambria: 73 Montana de Oro: 75 Pt. Buchon: 24
---	--	--

MPA Watch Survey Data

April 2014 – June 2014

Quarter 2

All Survey Sites – Quarter 2 throughout MPA Watch History



MPA Watch Survey Data

April 2014 – June 2014

Quarter 2

All Santa Cruz Sites

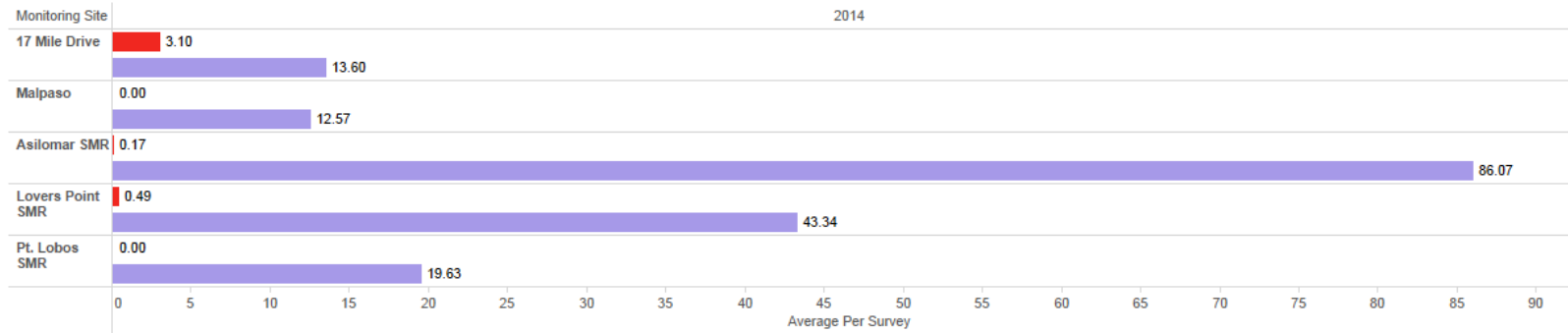


MPA Watch - Survey Site Data

Consumptive ■ Non-Consumptive ■

Year of Date

2014



- Beach
- Rocky Intertidal
- Offshore
- Boats
- Fishing Boats

Survey Region

- Santa Cruz
- Monterey
- SLO

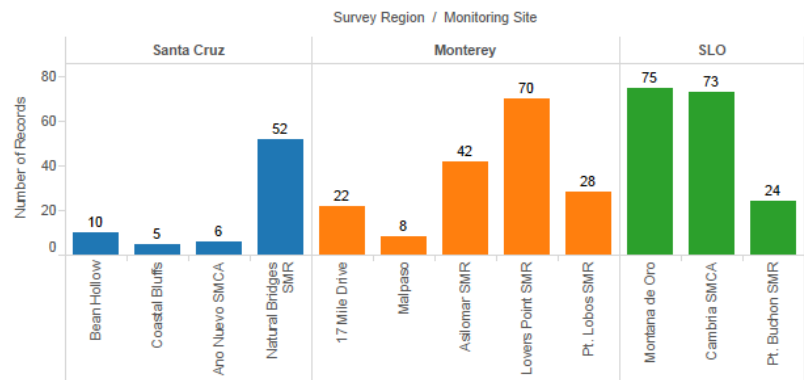
Monitoring Site

(Multiple values) ▼

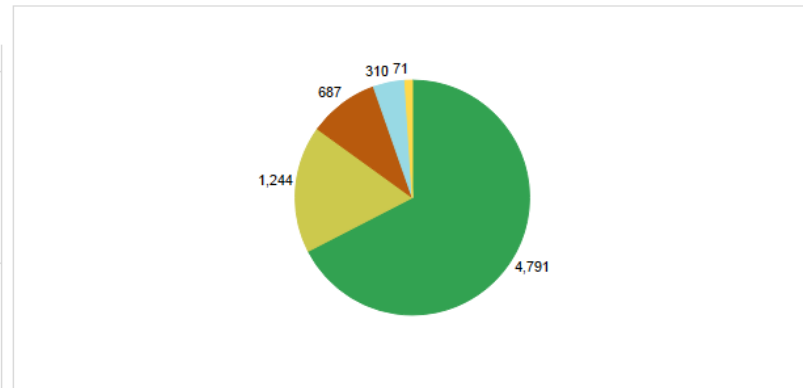
Month, Year of Date

- (All)
- April 2011
- May 2011
- June 2011
- July 2011
- August 2011
- September 2011
- October 2011
- November 2011
- December 2011
- January 2012
- February 2012
- March 2012
- April 2012
- May 2012
- June 2012
- July 2012
- August 2012
- September 2012
- October 2012
- November 2012
- December 2012
- January 2013
- February 2013
- March 2013
- April 2013

Total Surveys by Site



Total Activities



MPA Watch Survey Data

April 2014 – June 2014

Quarter 2

All Monterey Sites

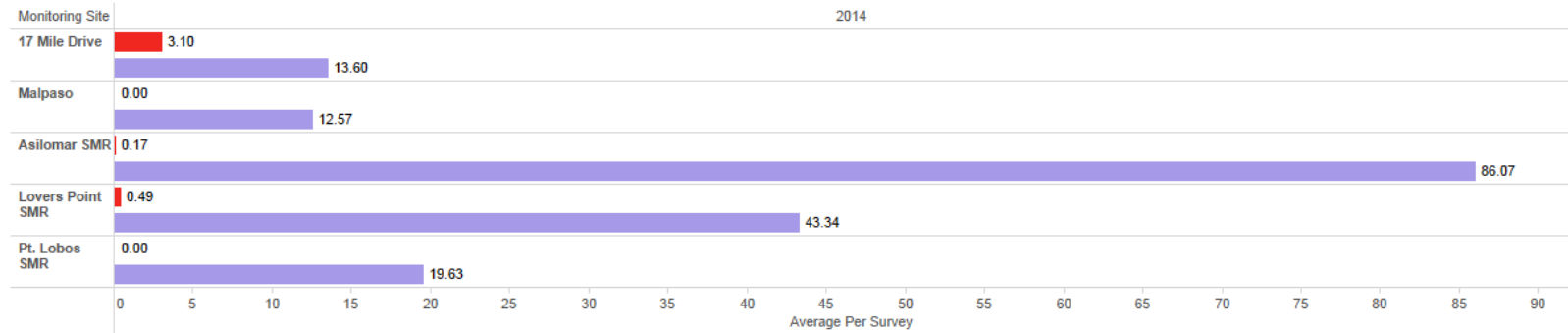


MPA Watch - Survey Site Data

Consumptive ■ Non-Consumptive ■

Year of Date

2014



- Beach
- Rocky Intertidal
- Offshore
- Boats
- Fishing Boats

Survey Region

- Santa Cruz
- Monterey
- SLO

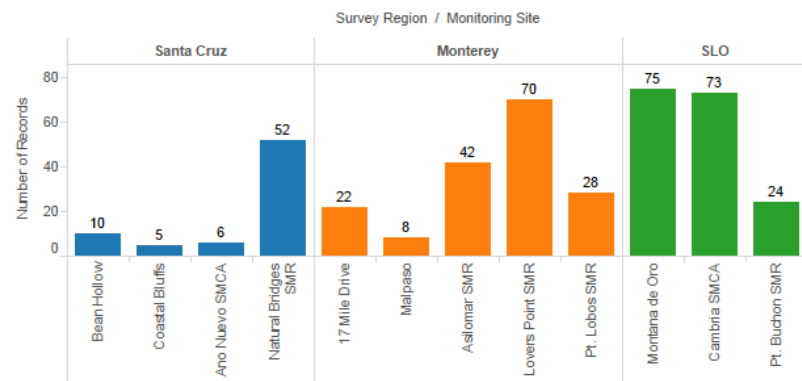
Monitoring Site

(Multiple values) ▼

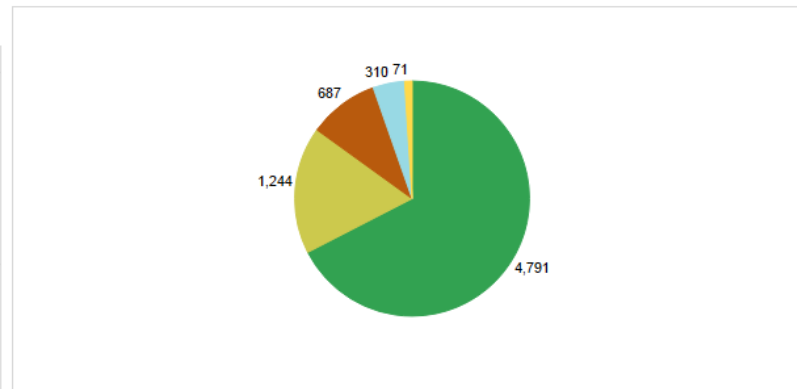
Month, Year of Date

- (All)
- April 2011
- May 2011
- June 2011
- July 2011
- August 2011
- September 2011
- October 2011
- November 2011
- December 2011
- January 2012
- February 2012
- March 2012
- April 2012
- May 2012
- June 2012
- July 2012
- August 2012
- September 2012
- October 2012
- November 2012
- December 2012
- January 2013
- February 2013
- March 2013
- April 2013

Total Surveys by Site



Total Activities

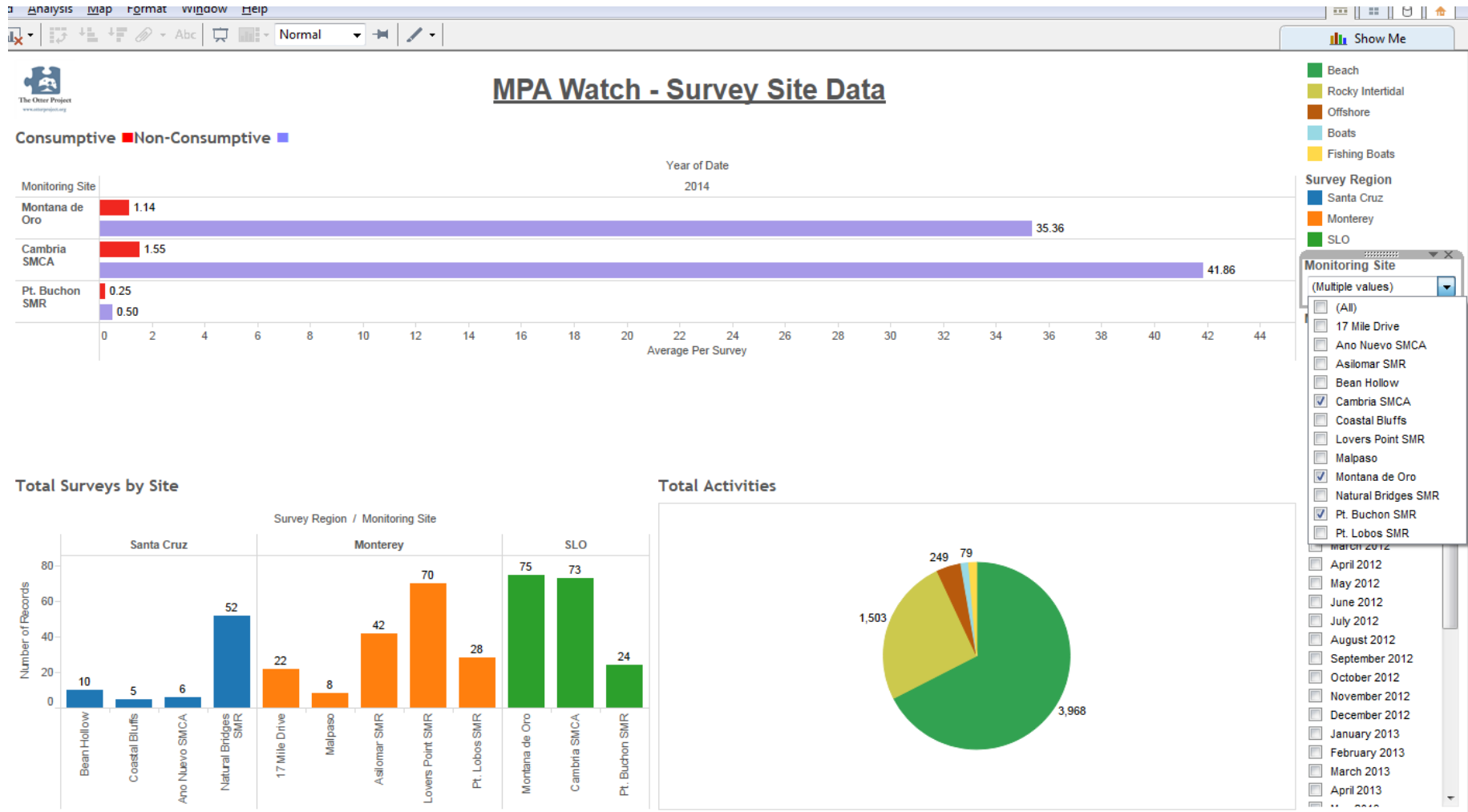


MPA Watch Survey Data

April 2014 – June 2014

Quarter 1

All San Luis Obispo Sites

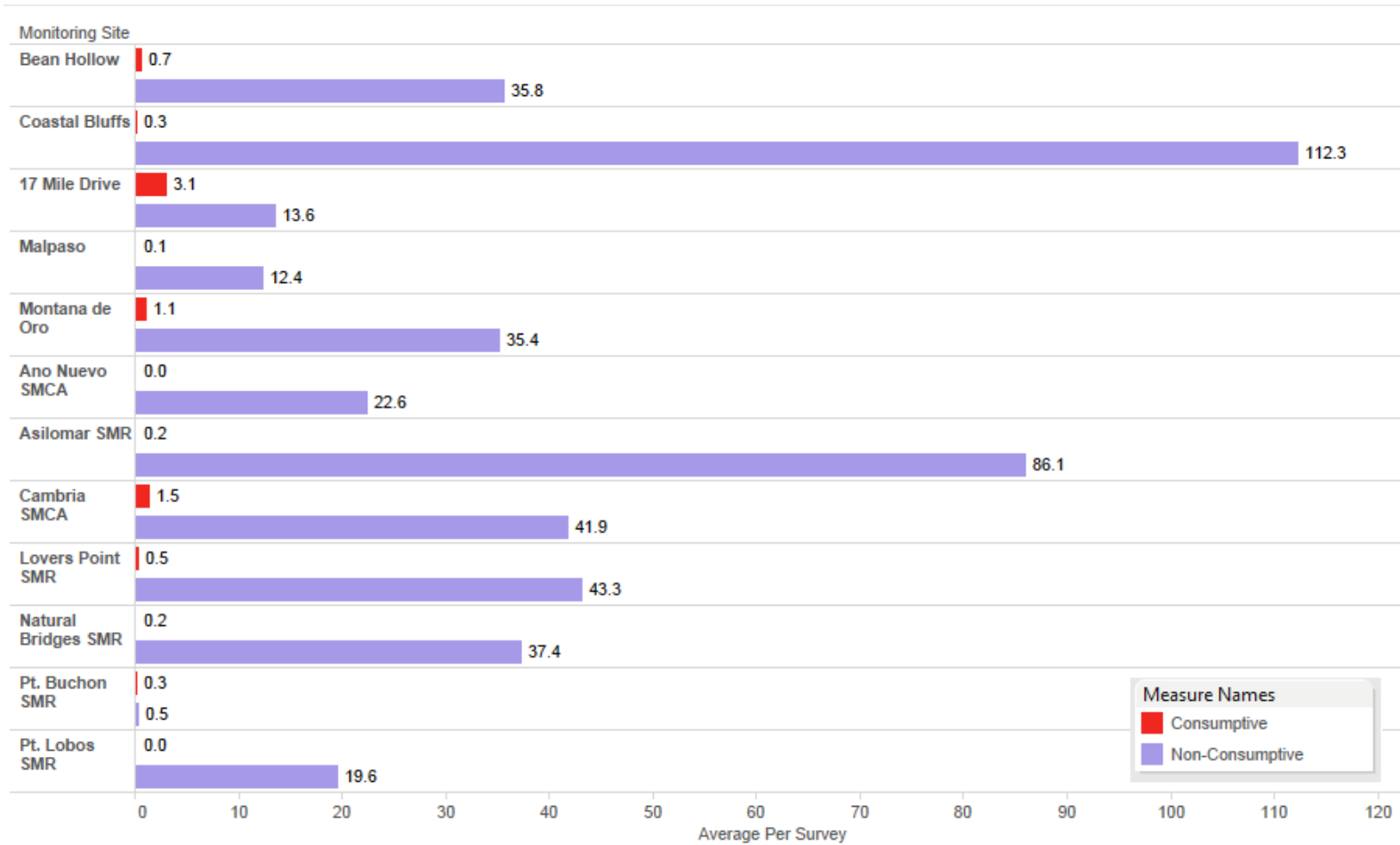


MPA Watch Survey Data

April 2014 – June 2014

Quarter 2

All Survey Sites, Non-consumptive vs. Consumptive

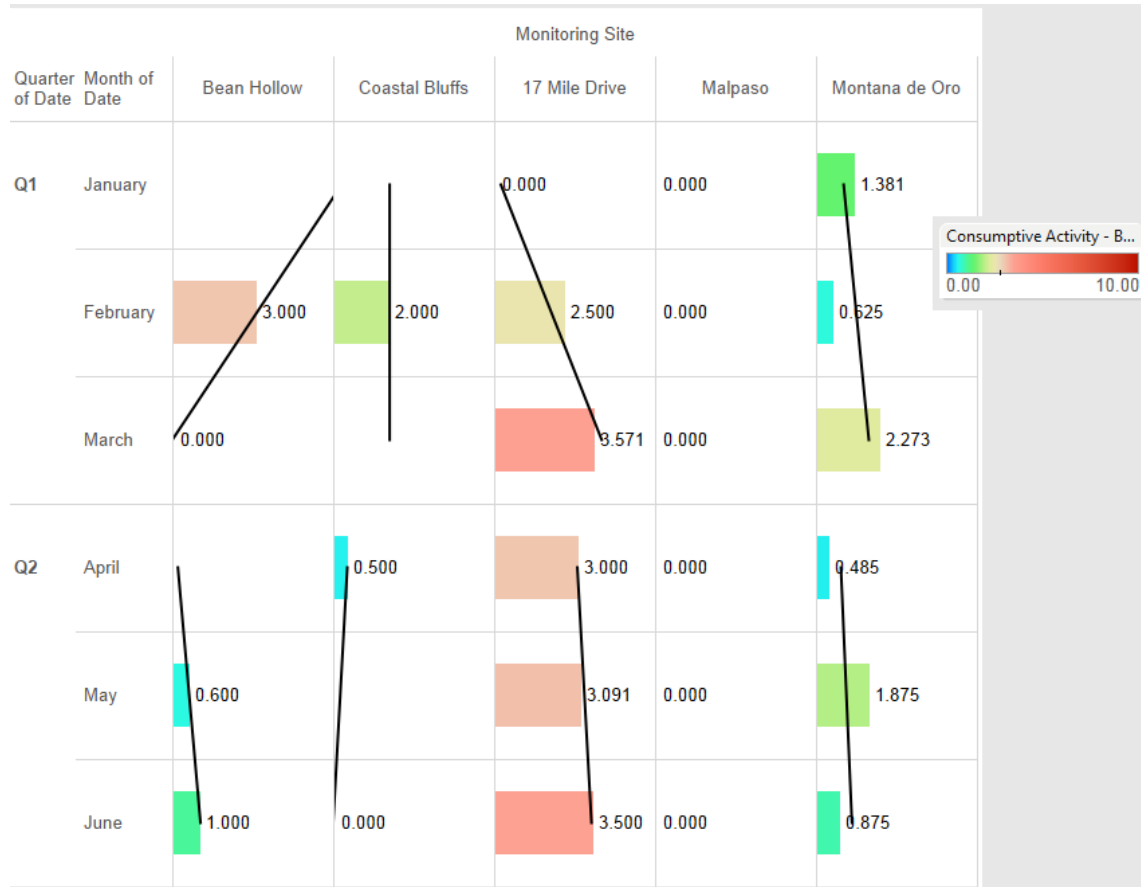


MPA Watch Survey Data

April 2014 – June 2014

Quarter 1

All Reference Survey Sites, Consumptive Trends

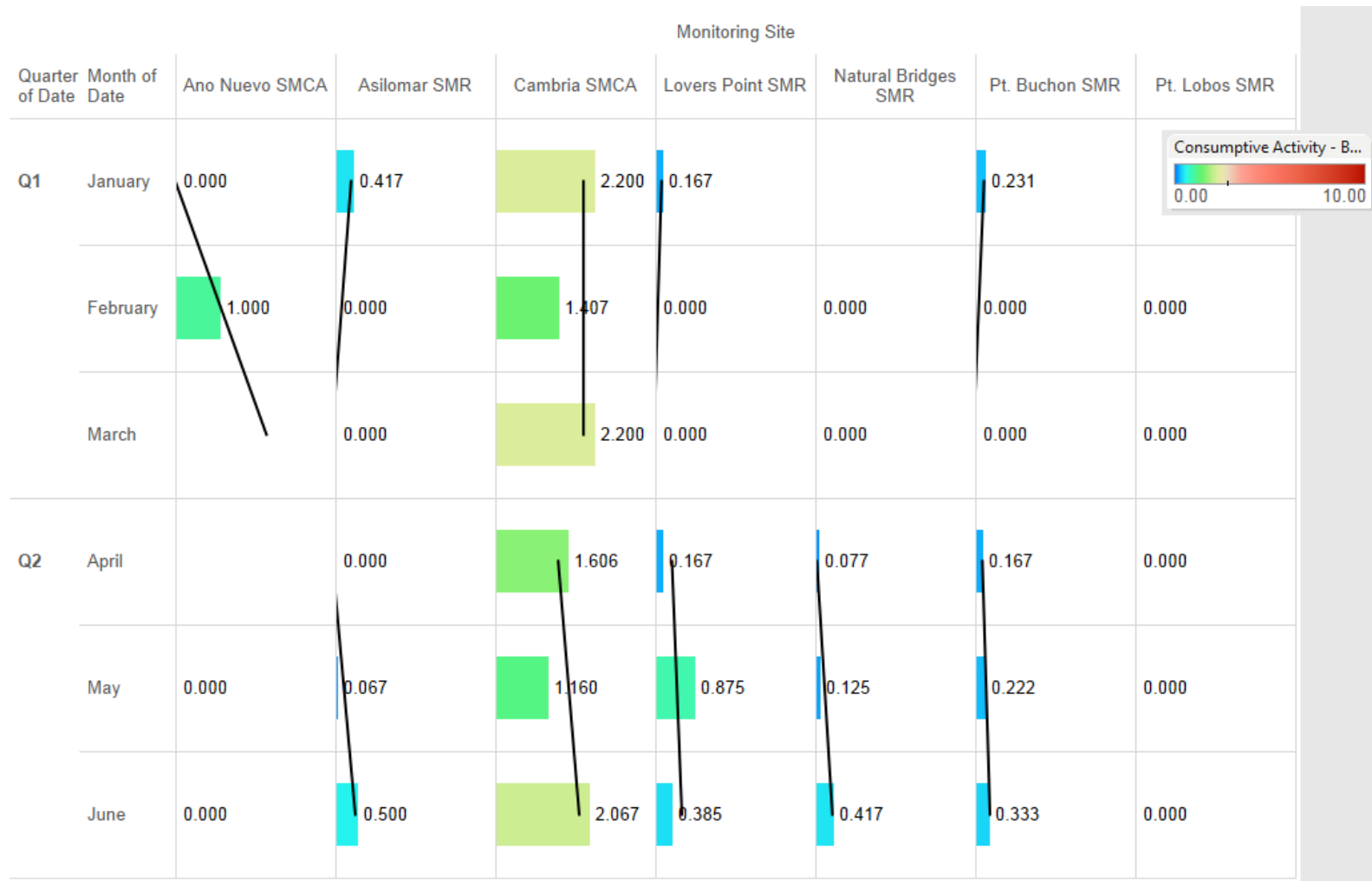


Reference sites: Bean Hollow, Coastal Bluffs, 17 Mile Drive, Malpaso, Montana de Oro

April 2014 – June 2014

Quarter 2

All MPA Survey Sites, Consumptive Trends



MPA sites: Ano Nuevo, Natural Bridges, Lovers Point, Asilomar, Pt. Lobos, Cambria, Pt. Buchon.